



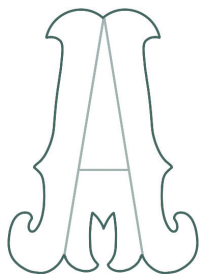
Flower Lettering Trace-to-Learn Practice Sheet

The Basic Steps: Letter A



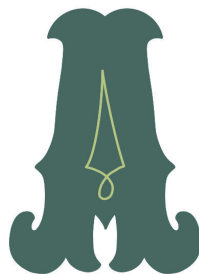
1

Draw the letter frame.



2

Add weight & serifs.



3

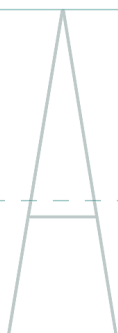
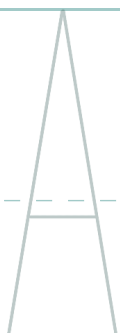
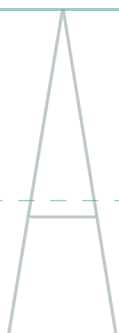
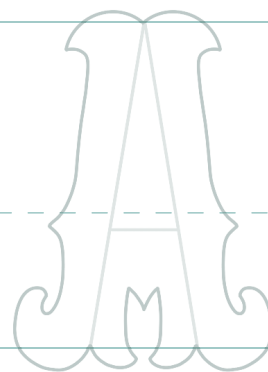
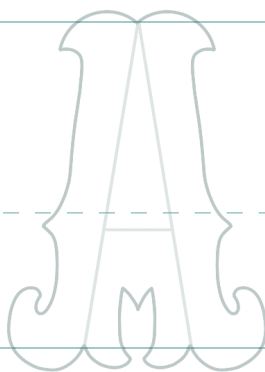
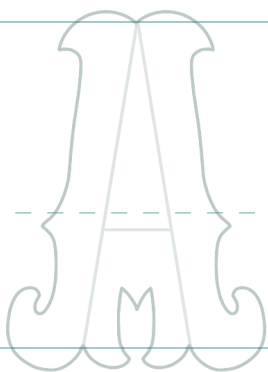
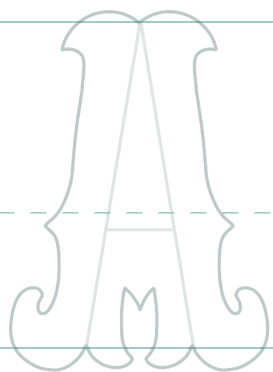
Add color +
legibility details.



4

Add floral +
botanical elements.

First, trace my letter weight and serifs. Next, try drawing the letter from just the frame.
Add your own details and colors. Get as creative as you wish. Try adding different details and elements on each letter!



Dawn Nicole

Worksheet Design ©2026 by Dawn Nicole Designs, LLC

Blog: bydawnnicole.com | Social: @bydawnnicole

Personal Use by Only. Re-distributing this PDF violates digital copyright laws. Thank you for respecting my copyright!